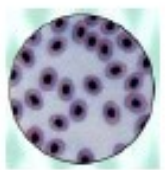


STERLING MANUFACTURING CO.

STERLING

BIOLOGY



S.No.	Items	Price
BI 001	BONE CUTTER	
BI 001/1	6", Stainless steel	170.00
BI 001/2	5", Stainless steel	150.00
BI 002	CAMERA LUCIDA	
BI 002/1	Prism Type in Velvet Box	750.00
BI 002/2	Mirror Type in Velvet Box	900.00
BI 003	CAVITY PLATE (Porcelain)	
BI 003/1	6 Cavity	30.00
BI 003/2	12 Cavity	40.00
BI 004	CAVITY SLIDE (Single Cavity)	5.00
BI 005	COVER SLIP (Pk. of 10Gm)	
BI 005/1	18mm, Square	8.00
BI 005/2	18mm, Round	10.00
BI 006/A	DISSECTING TRAY Without Wax, Size 10"x12"	
BI 006/1	G.I. Sheet	76.00
BI 006/2	Stainless steel	270.00
BI 006/B	DISSECTING TRAY With Wax, Size 10"x12"	
BI 006/3	G.I. Sheet	250.00
BI 006/4	Stainless steel	500.00
BI 007	DISSECTION BOX (17 Instrument)	
BI 007/1	Popular Make, Ordinary Quality	160.00
BI 007/2	Rohit Make, Superior Quality	320.00
BI 007/3	Surgeon Make, Deluxe Quality	700.00
BI 008	DISSECTING NEEDLE	
BI 008/1	Plastic Handle	4.00
BI 008/2	Stainless steel	12.00
BI 009	DOUBLE DEMONSTRATION EYE PIECE (In Velvet Box)	900.00

Serving in The Field of Science & Education Since 1965



S.No.	Items	Price
BI 010	FORCEPS (Stainless Steel)	
BI 010/A	<i>Blunt / Pointed</i>	
BI 010/1	5"	24.00
BI 010/2	6"	35.00
BI 010/3	8"	44.00
BI 010/4	10"	55.00
BI 010/5	12"	66.00
BI 010/B	<i>Forceps Pointed 4"</i>	10.00
BI 011	GANONG'S LIGHT SCREEN	70.00
BI 012	GANONG'S POTOMETER	
BI 012/1	Borosilicate Glass	200.00
BI 012/2	Neutral Glass	100.00
BI 013	HUMAN SKELETON Full size (Fibre)	
BI 013/1	<i>Routine Quality</i>	1200.00
BI 013/2	<i>Superior Quality</i>	1500.00
NOTE:	<i>Imported Skeleton & other Models are also Available.</i>	<i>P.O.R.</i>
BI 014	HUMAN SKELETON STAND	
BI 014/1	Metallic	1300.00
BI 014/2	Plastic	900.00
BI 015	HUMAN SKELTON IN ACRYLIC SHOWCASE	380.00
BI 016	HUMAN SKELTON (MINI), ON STAND	160.00
BI 017	KLINOSTAT	1200.00
BI 018	LENS CLEANING TISSUE (Paper Book of 100)	48.00
BI 019/A	STEREO MICROSCOPE	
BI 019/1	Simple Model, One Objective 2x, Two Eye Piece 10x or 15x	3600.00
BI 019/2	Superior Model, Two Objective 2x, 4x, Two Eyepiece 10x or 15x	7500.00
BI 019/3	Deluxe Model, Built in Illumination & Two objective & Two Eye piece	12000.00

Serving in The Field of Science & Education Since 1965



S.No.	Items	Price
MICROSCOPES		
BI 019	COMPOUND MICROSCOPE 'LABTOP Make' Two eyepiece 10x, 15x & two objectives 10x, 45x, with fixed condenser with wooden box. (Superior Optics)	2700.00
BI 020	COMPOUND MICROSCOPE 'LABTOP Make', Economical Model Two eyepiece 10x, 15x & two objectives 10x, 45x, with fixed condenser in Thermocole Box (Routine Optics)	2000.00
BI 021	COMPOUND MICROSCOPE 'MICRON Make' ISI Mark (Model KG-2) In wooden Box	3800.00
BI 022	COMPOUND MICROSCOPE 'Mkow Make' ISI Mark in Thermocole Box	3200.00
BI 023	MICROSCOPE JUNIOR MEDICAL 'LABTOP Make' Moveable condenser with two eyepiece 10x, 45x & two objective 10x, 45x in wooden box	3000.00
BI 024	MICROSCOPE JUNIOR MEDICAL 'MICRON' ISI Mark (Model KG-3)	4700.00
BI 025	MICROSCOPE MEDICAL 'LABTOP Make' Two eyepiece 10x, 15 x & three objectives 10x, 45x & 100x oil immersion with mechanical stage. In wooden box	4800.00
BI 026	MICROSCOPE MEDICAL MONOCULAR 'MICRON' ISI Mark [Model KG-5(A)]	7800.00
BI 027	MICROSCOPE BINOCULAR 'LABTOP Make' Two paired eyepiece, with four objective 4x, 10x, 45x, 100x oil imm. & with mechanical stage, with halogen lamp. In wooden box	10000.00
BI 028	MICROSCOPE BINOCULAR 'MICRON' ISI Mark (Model BINO Cxi)	21000.00
BI 029	MECHANICAL STAGE for Microscope	
BI 0291	Light pattern	650.00
BI 029/2	Heavy pattern	800.00

S.No.	Items	Price
BI 030	MICROSCOPE EYEPIECE (10x or 15x)	120.00
BI 031	MICROSCOPE OBJECTIVE	
BI 031/1	10x	200.00
BI 031/2	45x	300.00
BI 031/3	100x	700.00
BI 032	MICROSCOPE REFLECTOR (Mirror)	40.00
BI 033	DISSECTING MICROSCOPE (In Wooden box)	
BI 033/1	Routine Quality	550.00
BI 033/2	Brass Parts, Superior Quality	900.00
BI 034	MICROTOME (In Wooden Box)	
BI 034/1	ERMA Type	20000.00
BI 034/2	Spencer Type	26000.00
BI 035	MICROMETER EYEPIECE (Indian)	350.00
BI 036	PASTURE PIPETTE (Per Dozen)	96.00
BI 037	PROJECTION MICROSCOPE, 'LABTOP Make' With 6" Dome in wooden box. Superior Quality	7000.00
BI 038	OCULAR MICROMETER	
BI 038/1	Indian	150.00
BI 038/2	Imported	750.00
BI 039	OVERHEAD PROJECTOR	
BI 039/1	With twin lamp, 24volt, 250watt H.Lamp 'Make LABTOP'	9000.00
BI 039/2	With twin lamp, 24volt, 150watt H.Lamp 'Routine Quality'	7000.00
BI 040	O.H.P. TRANSPARENCIES (Various topics)	
BI 040/1	Coloured	60.00
BI 040/2	Black & white	40.00
BI 041	PERCHMENT PAPER (Book of 100 Lvs)	48.00

Serving in The Field of Science & Education Since 1965



S.No.	Items	Price
BI 042	PLAIN SLIDE GLASS, Thickness 1.35 (Pk of 50)	40.00
BI 043	POINTER EYEPIECE , 10x (in velvet box)	180.00
BI 044/A	SLIDE PROJECTOR For Slide 2"x2" (Manual)	
BI 044/1	Superior Quality	6600.00
BI 044/2	Routine Quality	3000.00
BI 044/B	AUTOMATIC SLIDE PROJECTOR (German) SIRO Make	20000.00
BI 045	PROJECTOR SCREEN	
	With folding tripod stand, 70"x50"	2800.00
BI 046	PROJECTOR SLIDE 2"x2" (Various topics)	10.00
BI 047	SCALPEL (Stainless Steel)	28.00
BI 048	SCISSOR (Stainless Steel)	
BI 048/1	4" Pointed, Routine Quality	44.00
BI 048/2	4" Pointed, Superior Quality	55.00
BI 048/3	5" Blunt, Routine Quality	55.00
BI 048/4	5" Blunt, Superior Quality	80.00
BI 049	STAGE MICROMETER	
BI 049/1	ERMA JAPAN	1750.00
BI 049/2	INDIAN, Superior Quality	950.00
BI 049/3	INDIAN, Routine	400.00
BI 050	WILLMOTH BUBBLER	170.00
BI 051	WATCH GLASS (Superior Quality), Supplied Per Dozen	
BI 051/1	Dia 2"	24.00
BI 051/2	Dia 2.5"	38.00
BI 051/3	Dia 3"	54.00
BI 051/4	Dia 4"	84.00
BI 051/5	Dia 5"	192.00
BI 051/6	Dia 6"	216.00

Serving in The Field of Science & Education Since 1965



S.No.	Items	Price
PREPARED SLIDES		
BI 053	SLIDE PREPARED FOR MICROSCOPE	
BI 053/1	Plant Tissue - Parenchyma, Collenchyma and Sclerenchyma, Xylem and Phloem, Dicot Stem/Root, Monocot Stem/Root, Fern	12.00
BI 053/2	Animal Tissue - Squamous Epithelium, Cuboidal Epithelium, Columnar Epithelium, Cardiac Muscle, Striated Muscle, Unstriated Muscle, Smooth Muscle, Nerve Cell, Mammal Kidney, Mammal Heart, Mammal Ovary, Mammal Testis, Mammal Skin, Mammal Bone, Mammal Artery, Mammal Vein, Mammal Liver, Mammal Spinal Cord, Algae	12.00
BI 053/3	Common Slides - Bacteria, Oscillatoria, Rhizopus (Bread mould) Agaricus (Mushroom), Yeast, Lichen, Riccia, Funaria (Moss), Marchantia, Pinus Cone, Paramecium, Spirogyra, Non-Medullated Nerve, Medullated Nerve, Areolar Tissue, Adipose Tissue, Mosquito W.M. , Ascaris Male, Ascaris Female	12.00
BI 053/4	Slide Amoeba	40.00
BI 053/5	Slide Entamoeba/ Ringworm/Blastula etc. (Rare)	30.00
BI 053/6	Slide Hydra / Human Blood R.B.C./W.B.C.	20.00
BI 053/7	Slide Mitosis, Set of 5 slides	150.00
BI 053/8	Slide Meiosis, Set of 12 slides	360.00
BI 054	SLIDE BOX (Wooden)	
BI 054/1	25 Slides	50.00
BI 054/2	50 Slides	100.00
BI 054/3	100 Slides	150.00
BI 055	SPECIMEN IN PLASTIC JAR (Common)	90.00
	Mushroom, Lichen, Funaria, Marchantia, Fern, Pinus Cone, Liver Fluke, Ascaris, Earthworm, Leech, Prawn, Pila, Starfish, Scollodon (Dog Fish) Labeo rohita, Wall Lizard, Milepede, Centipede, Red Root of Sugar Cane, White Root of Crucifera, Late Blight of Potato etc.	
BI 056	LIFE HISTORY OF SPECIMEN IN JAR	120.00
	Life History Butter Fly, Silk Worm, House Fly, Honey Bee, Mosquito etc.	

NOTE : All BIOLOGICAL products will be strictly supplied subject to availability and wildlife restrictions.